



WALTER EDWIN GRIESBACH

(1888 – 1968)

HIS LIFE AND WORK

Viola Heinzelmann-Schwarz

Founder's Lecture 2009

Auckland Medical Historical Society





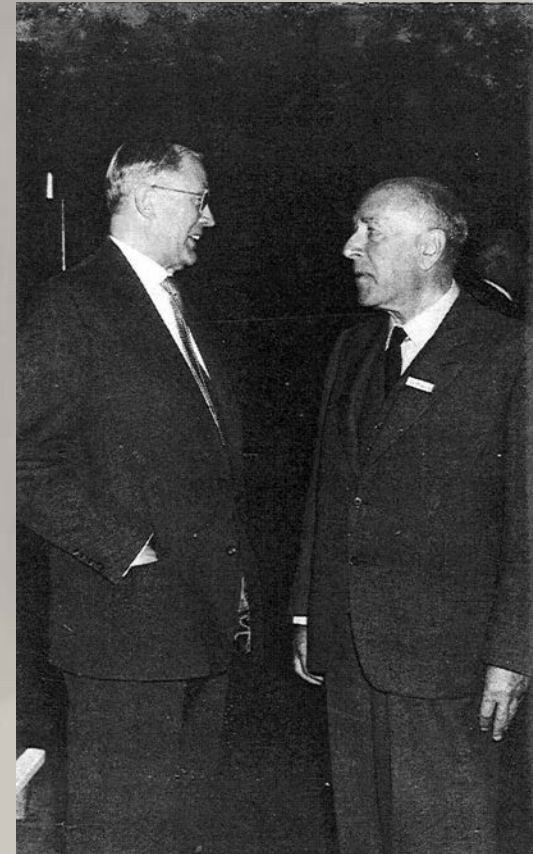
Hans-Erhard Bock

1903-2004

Ekkehard Kallee

Scholar of Hermann Bennhold

1893-1976



German Society for
Internal Medicine,
Wiesbaden 1960



Hans-Erhard Bock

1903-2004



Hermann Bennhold

1893-1976

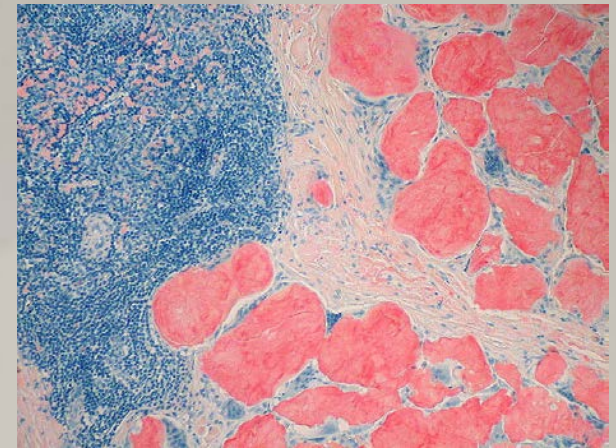
Bock's
Erythrocytometer

1 publication



Congo-red method

Amyloidosis



Sources

1. Archives

1. Office of Compensation (Amt für Wiedergutmachung), Hamburg: Griesbach file
2. Documents of the Endocrinology Research Department, University of Otago, Dunedin: 24 boxes, unindexed
3. Historic Staff Room, Medical Library, University of Otago
4. Hocken Archives, University of Otago: Otago Medical School, Dean's Papers
5. Hocken Library, University of Otago: Otago Medical School, Local Newspapers
6. Institute of the History of German Jews, Hamburg: Telephone Books
7. Walter E. Griesbach Estate (Dr. Duncan Adams): Certificates, references, letters, CVs, applications, telegrams, invitations, photographs, lists of publications, passports
8. National Archives of New Zealand, Wellington

Sources

1. Archives

9. Registrar of the University of Otago: Salary accounts 1941-1961

10. Staatsarchiv Hamburg (Hamburg State Archive): Lippmann family archive, Academia files, Medical Staff files, Griesbach file

2. **Written Communications:** ADAMS, Duncan (Dunedin); ANDRAE, Matthias (Hamburg); BERN, Howard (Berkeley, USA); BORRIE, John (Dunedin); **BROOK, Andrew** (Narooma, AUS); GALLAWAY, Ian (Dunedin); HALLENSTEIN, Rolf (Melbourne); HOWARD, Loyce (Dunedin); **HUNTER, June** (Dunedin); LASCH, Hans (Giessen, D); **LASSALLY, Werner** (Auckland); LESER, Elsbeth (Caulfield, AUS); LIPPMANN, Kurt (Caulfield, AUS); MALCOLM, Lawrence (Kaikohe, NZ); MONROE, Olive (Dunedin); PETERSEN, Pat (Dunedin); SELBERG, Werner (Hamburg); TRAEBING, Gerhard (Cisano di Bardolino, IT); WASSNER, Adelheid (Dunedin)

Sources

3. **Oral Communications:** ADAMS, Duncan (Dunedin); ANDRAE, Matthias (Hamburg); BOCK, Hans (Tuebingen, D); BORRIE, John (Dunedin); **BROOK, Andrew** (Narooma, AUS); FASTIER, Frederick (Dunedin); FRIEDLANDER, Ted (Dunedin); GREER, Margaret (Hamburg); HERD, Eric (Dunedin); HOFFMANN, Paul (Tubingen, D); HOWARD, Loyce (Dunedin); HUBBARD, John (Dunedin); **HUNTER, June** (Dunedin); KALLEE, Ekkehard (Tubingen, D); KRACHT, Joachim (Giessen, D); **LASSALLY, Werner** (Auckland); LOGAN, Len (Dunedin); MALCOLM, Donald (Dunedin); MALCOLM, Frances (Dunedin); MONROE, Charles (Dunedin); MONROE, Olive (Dunedin); PETERSEN, George (Dunedin); PETERSEN, Pat (Dunedin); PRESLAND, Joan (Dunedin); PURVES, Daphne (Dunedin); ROBINSON, Joy (Dunedin); SATCHELL, Geoff (Dunedin); SELBERG, Werner (Hamburg); STEWART, David (Dunedin); TAYLOR, Douglass (Dunedin); TROTTER, W. (Dunedin); WASSNER, Adelheid (Dunedin); WEISSER, Ursula (Hamburg)



Rosa Anna Griesbach
(*Seeligmann)



*07.10.1888 New York

WILHELM.

NEW YORK.



„Christmas 1890“



Samuel Albert Griesbach



Rosa Griesbach

Daughter of Henriette
(*Bauer) and Siegfried
Seeligmann (banker,
Hamburg)



Albert Griesbach

Son of Isaac Griesbach
and Rahel (*Katz) from
Beverungen /Westphalia

1889





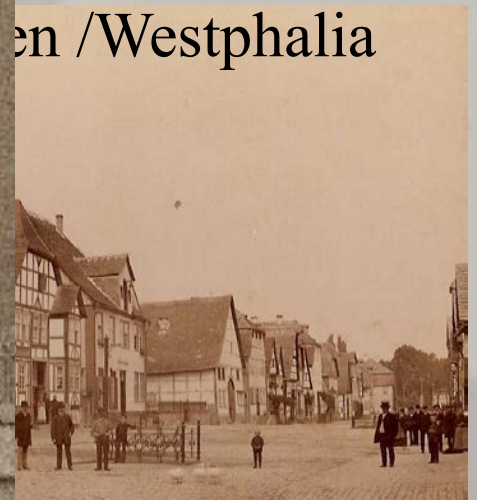
Rosa Griesbach

Daughter of Henriette
(*Bauer) and Siegfried
n (banker,



esbach

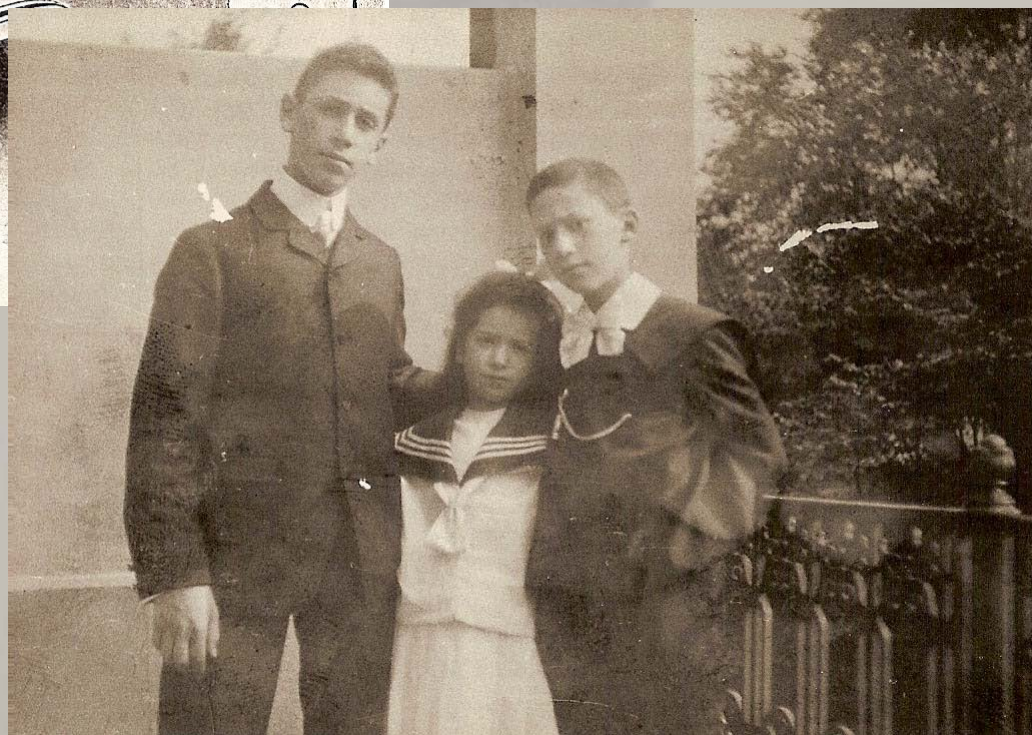
ac Griesbach
(*Katz) from
en /Westphalia





W. J. Hoffman

Walter, Alice, George 1895
New York



Walter, Alice, George 1900
Hamburg

School Education

Private Boys Primary School
(Adolph Thomsen)

1895 – 1897

Wilhelm Grammar School

1897 – 1906

Graduated as best pupil of
his class

1906 Rosa Griesbach and
children accepted as
German Citizens



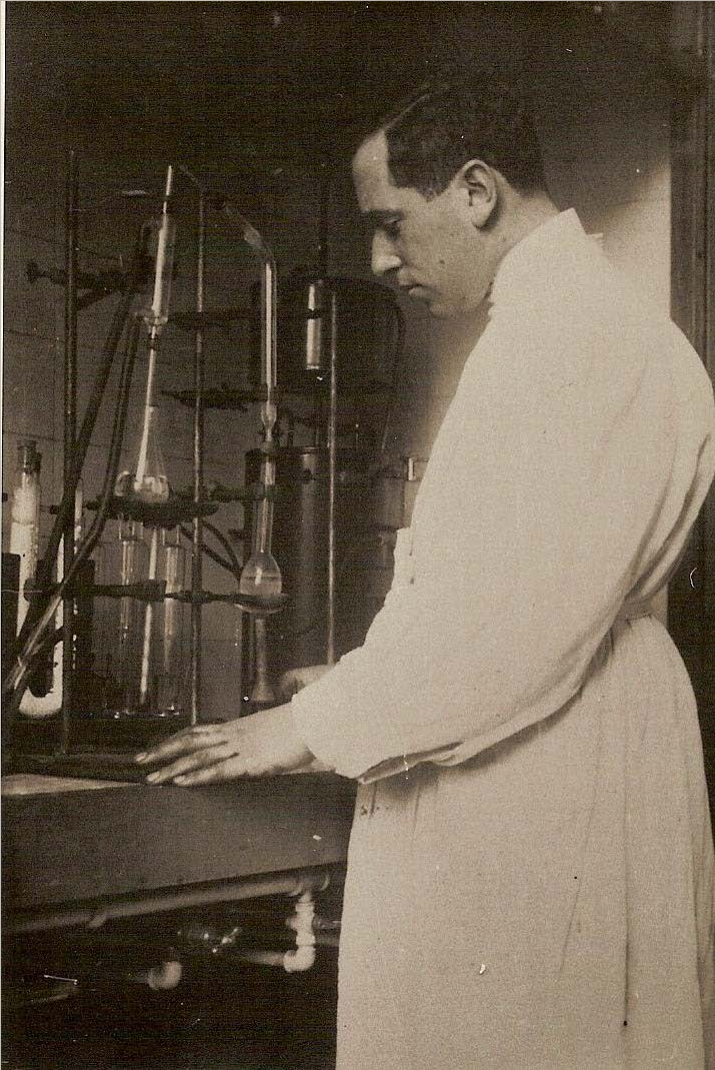
Student Years 1906 – 1911

Freiburg/Breisgau



1 semester
in Munich
and Kiel

Passed with
Grade A



First Scientific Achievements

During his student time
internships

-Pathological Institute Hamburg

Morris Simmonds

-Chemical and Physiological
Institute in Frankfurt/Main:

Gustav Embden

>>> **first publication** (1910) on
acetoacetic acid in diabetic dogs



3 publications

Intern year (1912) Medical Clinic
Freiburg: de la Champ and Frankfurt:
Schwenkenbecher

1912 – 1914 Continuation with research
in **Gustav Embden**'s Institute as intern
and volunteer

1912 **Graduation:** Award from the
Manfred Bernhard Schiff Foundation for
“work in laboratory biology and
pathology“

1912 – 1913 **MD Thesis:** “The formation
of lactic acid from carbohydrate in
,lacquer-coloured‘ blood“
> *magna cum laude*

Research of Glycolysis

Gustav Embden

1874 - 1933
Frankfurt

1929 Description of
Embden-Meyerhof-
Parnas Cycle



Otto Meyerhof

1884 – 1951

Heidelberg (Otto
Warburg), Kiel

Nobel Laureate
Medicine 1922

Jakub Parnas

1884 – 1949

Lviv / Lemberg
(Galicia)

Carbohydrate and
muscle metabolism

Important basis to
understand Diabetes

Medical Career - Beginnings

Wiesbaden City Hospital (1914 - 1915):

Medical Director **Wilhelm Weintraud**
(1866 – 1920)

In charge of:

- Large clinical ward
- Metabolic laboratory
- Hospital laboratory

5 publications





World War I
Military Physician
1916 - 1918



Academic career

St. Georg General Hospital, Hamburg 1919 – 1924

De facto Medical Director: **Morris Simmonds**

1st Professor of Pharmacology University of Hamburg and
Head of Institute: **Arthur Bornstein**

Clinical work and research
continuing his former
work on insulin, uric acid
and fatty acids

14 publications



Academic career

1924 *venia legendi* for pharmacology (Senior Lecturer; „permission to lecture“) University of Hamburg; thesis titled „On the total blood volume“

Inaugural lecture “on insulin“

Resigns from Hospital, Private Practice Internal Medicine

Lecturer Institute of Pharmacology



December 1924

Marriage with Olga Hallenstein



Rittergut Krassow, Wismar (Mecklenburg/Lower Pomerania)

Olga Griesbach (*Hallenstein)

***1899 Krempe, Villa Baroda (Germany)**



**Olga and Henry
Michaelis Hallenstein**

†1973 Dunedin (New Zealand)



Zara Beatrice Hallenstein (*Gotthelf)



Olga and Griesbach

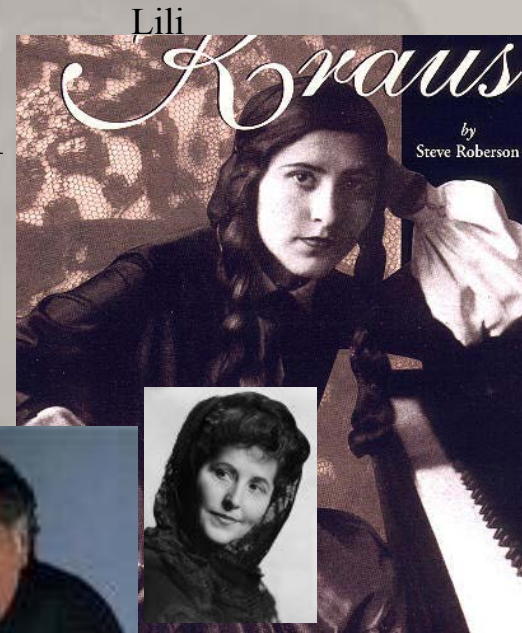




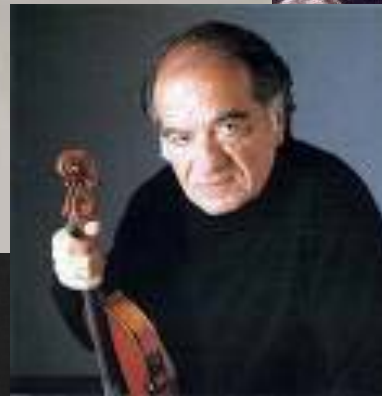
Gustav Gründgens

Friends from the musical and theatrical world

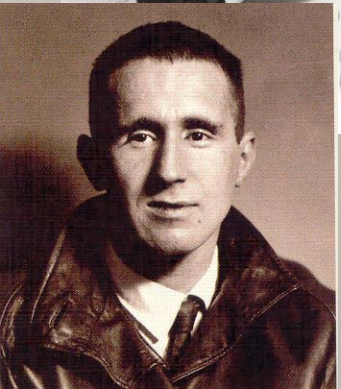
Marianne
Hoppe



Ruggiero
Ricci



Erna Berger



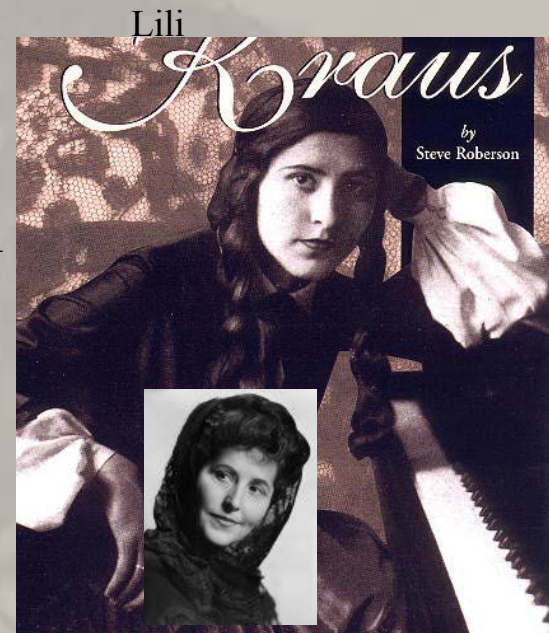
Berthold
Brecht

Yeltah and
Yehudi
Menuhin



Richard Tauber

Friends from the musical
and theatrical world



Academic career

1926 Senior Consultant, St. Georg General Hospital

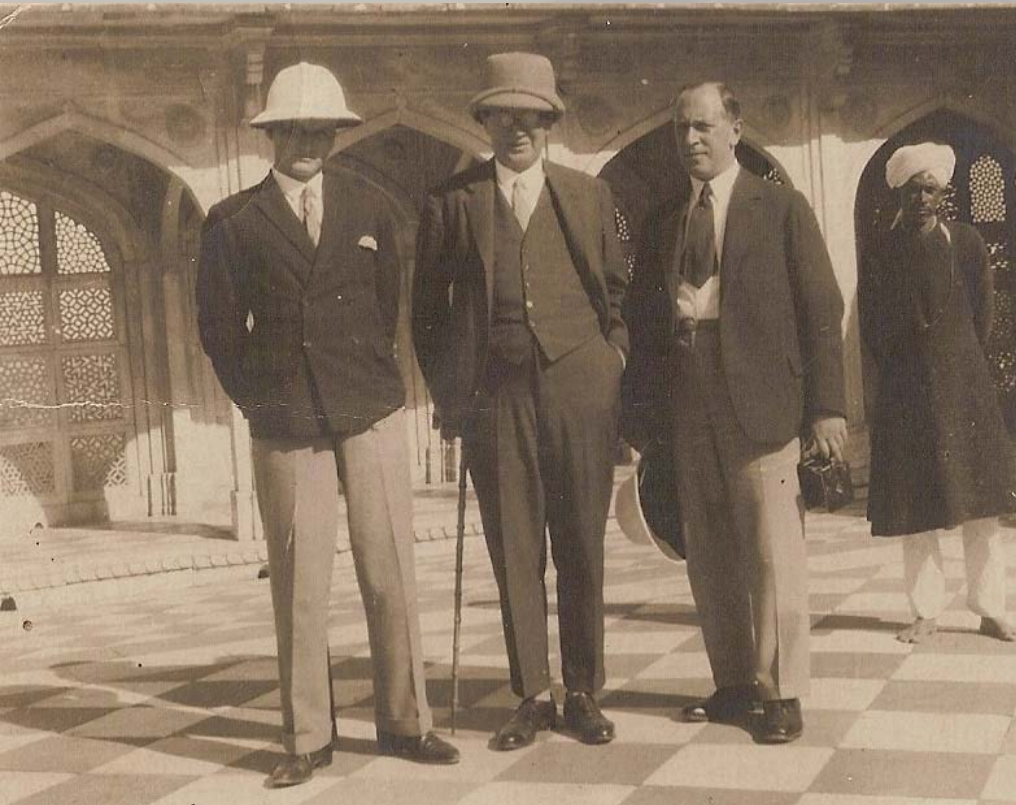
Medical Director: Theodor Deneke

Private Practice

Research in the Pharmacological Institute

3 publications

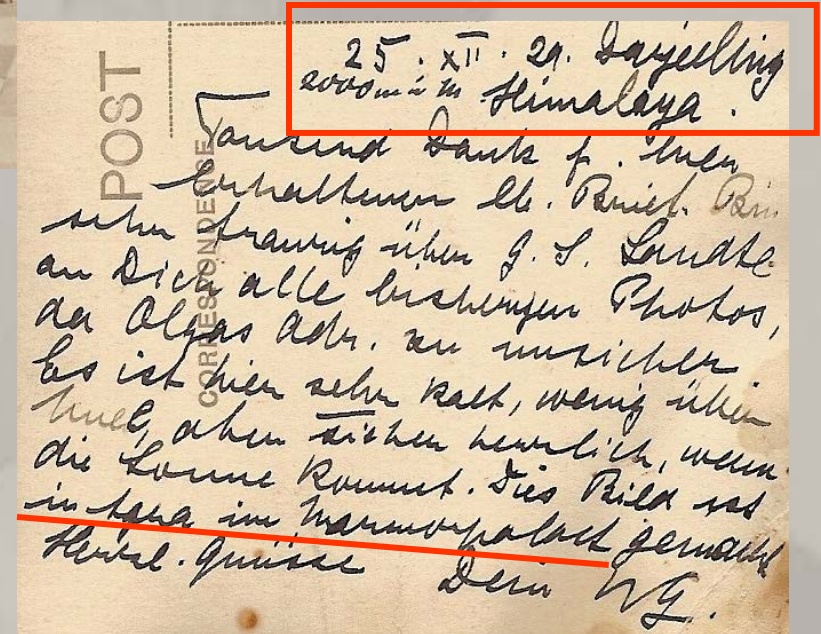




Journey to India

Nov. 1929 – March 1930

Griesbach-WE: Indian hospitals.
Med Welt 37 (1930), 1-4



“We scoff at the flags – but we love this country. And just as the Nationalist organisations go with their drums around the roads – with similar justice, with exactly the same rights, we, who were born here, we, who write and speak better German than most of the nationalist donkeys – with exactly the same right we lay claim to river and forest, beach and house, clearing and meadow: it is our land. We have the right to hate Germany – because we love it. We have to be taken into account when people speak of Germany: we, that is communists, young socialists, pacifists, freedom lovers of all levels; we have to be considered when people think of “Germany”. How simple to act as though Germany were made up just of national groups. Germany is a divided land, and we are one part of it”

Kurt Tucholsky: *Heimat* (1929) in: *Gesammelte Werke III* (1929-1932). Reinbek (1961), 314.

Gradual Exclusion Politics

01.04.1933 “day of general boycott of Jews” > national
Socialist groups warned against entering doctor’s
practices

07.04.1933 “Law for the re-establishment of the professional
public service”

> 40 University teachers were dismissed up to 30 September 1934
(4. Place after Berlin, Frankfurt and Breslau)

enforcement regulations of 04.05.1933 and 06.05.1933

➤ extended to non-civil servants such as Honorary Professors,
private lecturers, Senior Lecturers and Associate Professors

5 publications

01.07.1933

Agreement Hartman Association and Private Insurance Organisations



Complete exclusion of Jewish doctors even in private insurance companies; exception if they treated Jewish patients

- **Loss of permission to teach**
- **Loss of position as Senior Consultant in St. Georg Hospital**
- **Restrictions within his private practice**

1934 - 1938



1930s



Mollerstrasse 16

today

15.**09**.1935 „Nuremberg Laws“ > no female assistance
> no allowance to write opinions for
abortions

14.**11**.1935 „Reich Citizens Law” > last Jewish medical
officials, University lecturers and senior
consultants, who were covered by the exception
rules of the Professional Occupation Law, lost their
positions
> withdrawal of entry to private insurance
companies (affecting 3000 doctors)

➤ **Loss of private practice**

**01.05.1938 Director Internal Medicine Department
Israelite Hospital Hamburg**



Hamburg St. Pauli

1841 – 09/1939

Salomon Heine



Hamburg Alsterdorf

1959 -

30.09.1938 “Fourth Regulation of the Reich Citizen’s Law”

- > appointment of 3152 Jewish doctors still active was cancelled
- > 709 of them (including Griesbach) were permitted to treat only Jews and their own families as ‘medical orderlies’, not as doctors any more
- > by end of 1938 number of such doctors 285

09.11.1938 Pogrom night („Kristallnacht“) > Demolition of Synagogues

- > loss of shops, businesses, enterprises = loss of existence and homelessness



Synagogue Ohel Jacob, Munich

1891

Nov 1938



Emigration from Germany in the 1930s

- 2 large waves of emigration: 1933/34 and 1938/39
- 1938/39 mainly older doctors in higher positions > Driven by necessity to undertake the difficult conditions abroad
- **“Tax on flight from the Reich”** > left emigrants with only 4-6% of their assets
- Requirement to repeat the final medical examination in the language of the country or after additional medical studies
- **Emigration countries for physicians** were: 22% Great Britain, 18% U.S.A., 13% Palestine, 9 % Turkey, 7% Netherlands and Belgium, 7% Switzerland, 3% France, 3% USSR, 3% Canada, Australia and New Zealand together, and 9% other countries

28.08.1938

Letter to Secretary of Medical Council,
Wellington „to study Medicine at one of the
Universities of New Zealand, preferably
Dunedin“

02.09.1938

„**Society for the Protection of Science and
Learning**“ request for open research positions
sent to Sir Charles Hercus, Dean Medical
School Dunedin; Carnegie Foundation:
transport and 2 yrs salary provided

26.10.1938

„Permit To Enter New Zealand“



Olga and her cousin
Percy Halstead 1940

12.12.1938

Dr. Charles Hercus informs the
Chancellor about Griesbach's
appointment

20.12.1938

Griesbach informs Hamburg
Health Department about his
emigration (via London>Perth
>Sydney>Wellington)

24.04.1939

Arrival in New Zealand



Melbourne 1939

Sir Charles Hercus influenced research in New Zealand:

➤ 1939 Foundation of Medical Research Council

➤ Started Thyroid Research > Introduction of sodium iodide supplementation 1932

➤ Joined in 1932 by chemist and clinician **Herbert Dudley Purves** and later by chemist **Thomas Henry Kennedy**

➤ Griesbach decides to join the Thyroid Research group



Griesbach, Sir Charles Hercus, Leopold Kirschner 1960s

01.12.1939

> Immigration stop to New Zealand after begin WW II

> 1200 emigrant doctors „**enemy aliens**“

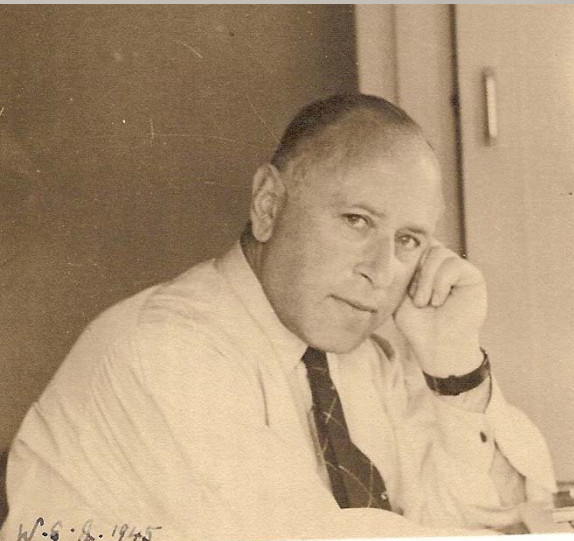
> require permission to leave residence

> interrogation of collaborators and Dean

> censorship of post and confiscation of radios

> classification of enemy aliens in different classes after informal interview with police; potential internation („B“)

> classified „D“ = normal restrictions



01.06.1941 Paid part-time position in „Thyroid Research Department“ and part-time lecturing in Physiology (until after war) > **2 publications**

1943 International recognition of research team Purves – Griesbach – Kennedy > **2 publications**

01.02.1945 Full time paid employment in Thyroid Research Department under Herbert Purves (Hercus building) > **3 publications**

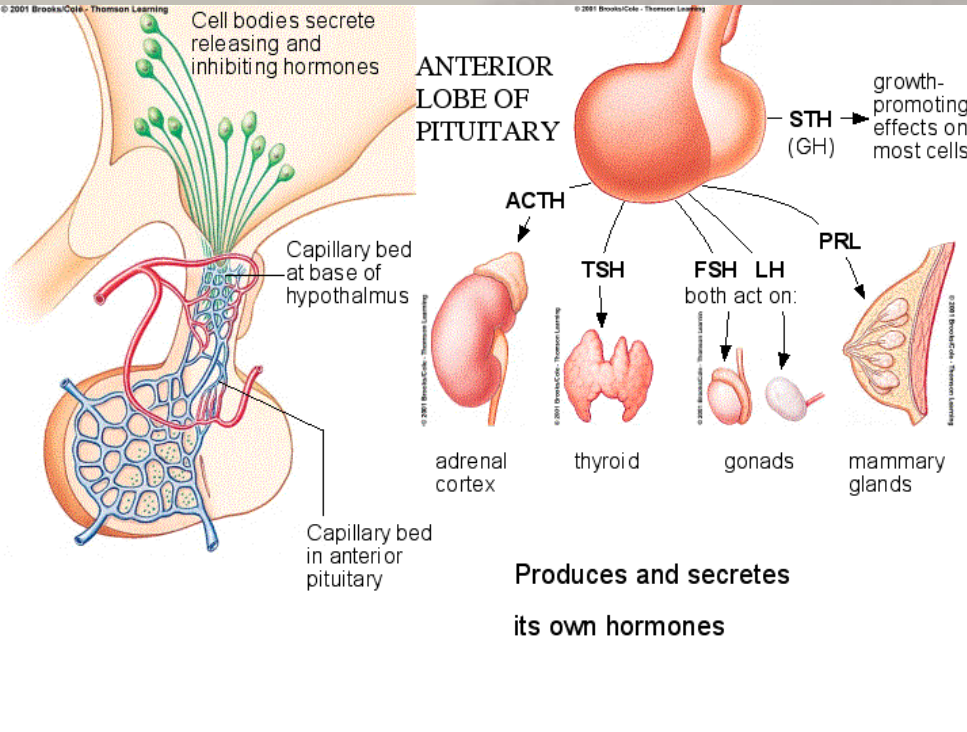
Kennedy, Purves, Sir Henry Dale 1950s



Hercus Building



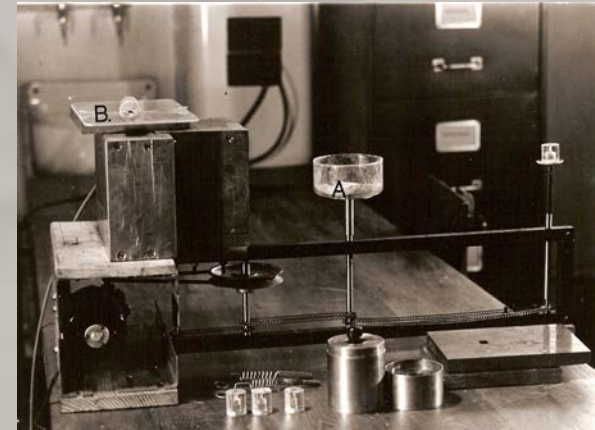
Thyroid > Endocrinology Research



Initiation of studies of pituitary cytology

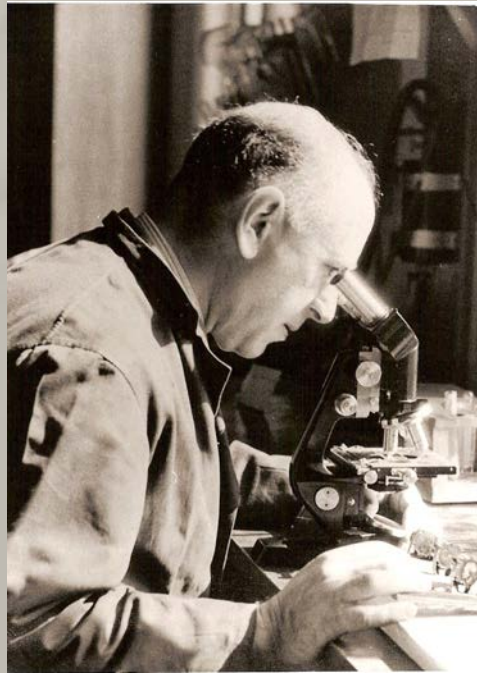
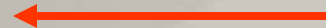
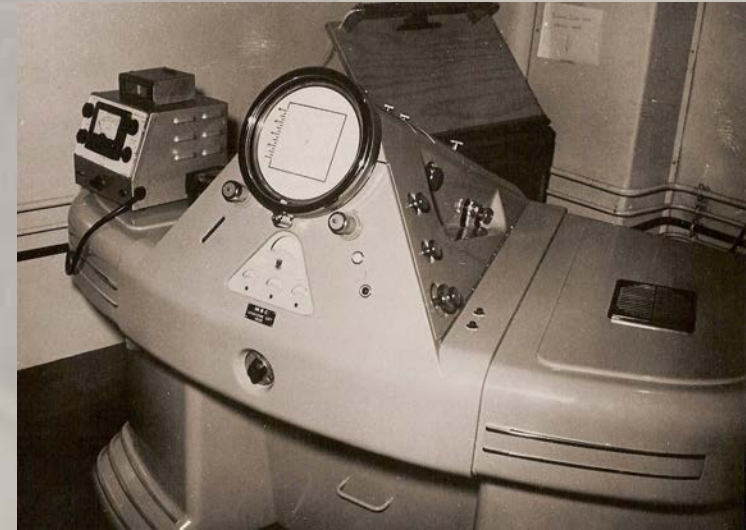


June Hunter



Creation of artificial hormonal deficiency states in animals

including the histology of the pituitary gland to functional hormone deficiencies



05.-25.07.1948 Research Visit to Physiology Department
Berkeley / California; start collaboration

5 publications



Ian Chaikoff



Eleanor Siperstein

Important findings of the team Purves-Griesbach-Kennedy

- 1945** Thiouracil can be used as thyreostatic drug
- 1951** Site of production for all six anterior pituitary hormones
- 1956** Autoimmune defect causes exophthalmia in Grave's Disease >>> Description of LATS = long-acting thyroid stimulator (D. Adams and H. Purves)



01.01.1959 Official retirement

1941-1959:

46 publications

It was “not possible during the 50s, not to hear about Purves and Griesbach in this field of research”(J. Kracht)

Social Life in Dunedin

Joan Presland



Frank
Halstead
and family

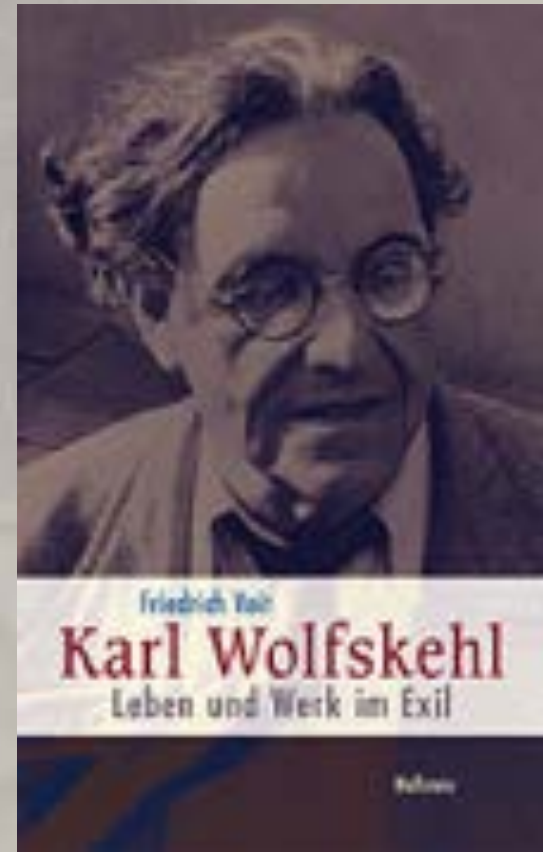


Stefan George



Karl Wolfskehl

„Münchener Kosmiker“



Founding Member Chamber Music Society
and Goethe Society Dunedin

Late years of his life

Increasing health problems (angina 1945 onwards, 1949 myocardial infarction)

- 1957 Reparation payment from the West German Government
- 1960 Birthday gratulations from Hamburg University
- 1960 Invitation to the German Conference for Internal Medicine (Invitation Hermann Bennhold) > visited several other German universities and gave lectures
- 1967 Elected Member of the International Academy Leopoldina, Leipzig
- 1968 Myocardial Infarction > passed away 10. August 1968
- Olga Griesbach dies 02. March 1973



Dr. Walter B. Jones

Physician

Pathologist

Biochemist

Endocrinologist

Great scholar in the classical sense